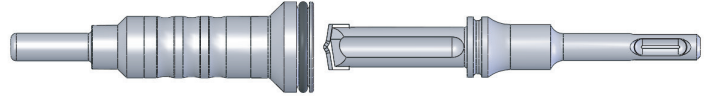


PRODUCT DATA

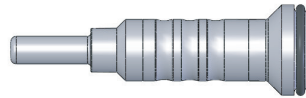
**Proton SDS + Stop Drill (SCX) Snap Fit Setting Tool: Full Kit**

SKU Model #	Anchor Rod Size	Setting Tool	Drill bit diameter	Setting Pin Length	Quantity	
					Box	Carton
554035	3/8"	3/8"	1/2"	21/32"	1	20
554042	1/2"	1/2"	5/8"	1-7/32"	1	20



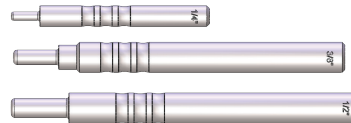
**Proton Snap Fit Setting Tool Only**

SKU Model #	Anchor Rod Size	Setting Tool	Setting Pin Length	Quantity	
				Box	Carton
554059	3/8"	3/8"	21/32"	1	20
554066	1/2"	1/2"	1-7/32"	1	20



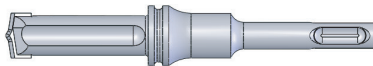
**Proton Hand Setting Tool**

SKU Model #	Anchor Rod Size	Setting Tool	Setting Pin Length	Quantity	
				Box	Carton
554141	1/4"	1/4"	19/32"	1	20
554158	3/8"	3/8"	21/32"	1	20
554165	1/2"	1/2"	1-7/32"	1	20



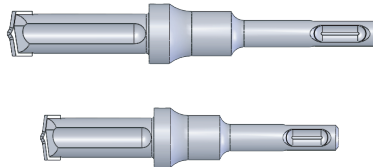
**Proton SDS + Stop Drill (SCX)**

SKU Model #	Drill bit diameter	Quantity	
		Box	Carton
554073	1/2"	1	20
554080	5/8"	1	20



**Proton II SDS + Stop Drill**

SKU Model #	Drill bit diameter	Quantity	
		Box	Carton
554097	3/8"X 1-1/16"	1	20
554103	1/2"X 1-11/16"	1	20
554127	5/8"X 2-1/16"	1	20
554134	1/2"X 13/16"	1	20
554110	5/8"X 1-3/16"	1	20



**Proton DI Proton Anchor**

SKU Model #	Anchor Rod size	Drill Bit Diameter	Bolt Threads	Body Length	Thread length	Quantity	
						Box	Carton
554004	1/4"	3/8"	1/4"-20 UNC	1"	7/16"	100	2000
554011	3/8"	1/2"	3/8"-16 UNC	1-9/16"	5/8"	50	1000
554028	1/2"	5/8"	1/2"-13 UNC	2"	3/4"	50	500

