

PRODUCT DATA

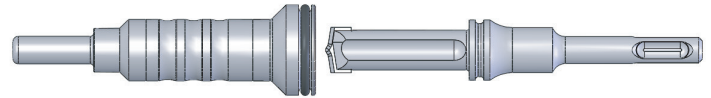
Proton DI Proton Anchor

Model Number	Anchor Rod size	Drill Bit Diameter	Bolt Threads	Body Length	Thread length	Quan ty	
						Box	Carton
DI-00141	1/4"	3/8"	1/4"-20 UNC	1"	7/16"	100	2000
DI-00121	3/8"	1/2"	3/8"-16 UNC	1-9/16"	5/8"	50	1000
DI-00581	1/2"	5/8"	1/2"-13 UNC	2"	3/4"	50	500



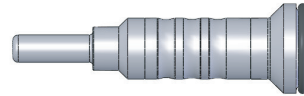
Proton SDS + Stop Drill (SCX) Snap Fit Setting Tool: Full Kit

Model Number	Anchor Rod Size	Se ng Tool	Drill bit diameter	Se ng Pin Length	Quan ty	
					Box	Carton
TK-12381	3/8"	3/8"	1/2"	21/32"	1	20
TK-58121	1/2"	1/2"	5/8"	1-7/32"	1	20



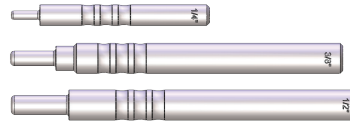
Proton Snap Fit Setting Tool Only

Model Number	Anchor Rod Size	Se ng Tool	Se ng Pin Length	Quan ty	
				Box	Carton
ST-00380	3/8"	3/8"	21/32"	1	20
ST-00120	1/2"	1/2"	1-7/32"	1	20



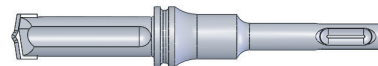
Proton Hand Setting Tool

Model Number	Anchor Rod Size	Se ng Tool	Se ng Pin Length	Quan ty	
				Box	Carton
HT-00142	1/4"	1/4"	19/32"	1	20
HT-00382	3/8"	3/8"	21/32"	1	20
HT-00124	1/2"	1/2"	1-7/32"	1	20



Proton SDS + Stop Drill (SCX)

Model Number	Drill bit diameter	Quan ty	
		Box	Carton
DS-12382	1/2	1	20
DS-58121	5/8	1	20



Proton II SDS + Stop Drill

Model Number	Drill bit diameter	Quan ty	
		Box	Carton
DS-00381	3/8"	1	20
DS-00123	1/2"	1	20
DS-00583	5/8"	1	20

