

PRODUCT DATA

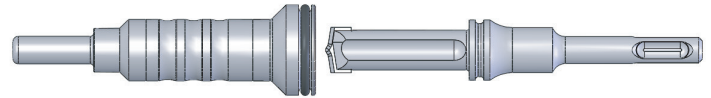
Proton DI Proton Anchor

Model Number	Anchor Rod size	Drill Bit Diameter	Bolt Threads	Body Length	Thread length	Quantity	
						Box	Carton
DI-0014-1	1/4"	3/8"	1/4"-20 UNC	1"	7/16"	100	1000
DI-0012-1	3/8"	1/2"	3/8"-16 UNC	1-9/16"	5/8"	50	500
DI-0058-1	1/2"	5/8"	1/2"-13 UNC	2"	3/4"	50	500



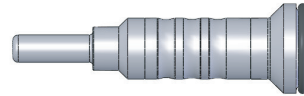
Proton SDS + Stop Drill Snap Fit Setting Tool: Full Kit

Model Number	Anchor Rod Size	Setting Tool	Drill bit diameter	Drill bit usable length	Setting Pin Length	Quantity	
						Box	Carton
1238-TK	3/8"	3/8"	1/2"	1-11/16"	21/32"	1	10
5812-TK	1/2"	1/2"	5/8"	2-1/8"	1-7/32"	1	10



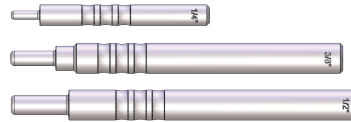
Proton Snap Fit Setting Tool Only

Model Number	Anchor Rod Size	Setting Tool	Drill bit diameter	Drill bit usable length	Setting Pin Length	Quantity	
						Box	Carton
ST-0038-K	3/8"	3/8"	1/2"	1-11/16"	21/32"	1	20
ST-0012-K	1/2"	1/2"	5/8"	2-1/8"	1-7/32"	1	20



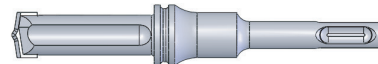
Proton Hand Setting Tool

Model Number	Anchor Rod Size	Setting Tool	Drill bit diameter	Drill bit usable length	Setting Pin Length	Quantity	
						Box	Carton
HT-0014	1/4"	1/4"	3/8"	1-1/16"	19/32"	1	100
HT-0038	3/8"	3/8"	1/2"	1-11/16"	21/32"	1	50
HT-0012	1/2"	1/2"	5/8"	2-1/8"	1-7/32"	1	50



Proton SDS + Stop Drill

Model Number	Anchor Rod Size	Drill bit diameter	Drill bit usable length	Setting Pin Length	Quantity	
					Box	Carton
3814-T	1/4"	3/8"	1-1/16"	19/32"	1	100
1238-T	3/8"	1/2"	1-11/16"	21/32"	1	50
5812-T	1/2"	5/8"	2-1/8"	1-7/32"	1	50



Proton II SDS + Stop Drill

Model Number	Drill bit diameter	Anchor Size	Drill bit depth embedment	Quantity	
				Box	Carton
DS-0038	3/8"	1/4"	1-1/16"	1	100
DS-0012	1/2"	3/8"	13/16"	1	50
DS-0012-1	1/2"	3/8"	1-11/16"	1	50
DS-0058	5/8"	1/2"	1-3/16"	1	50
DS-0058-1	5/8"	1/2"	2-1/16"	1	50

